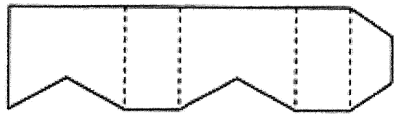


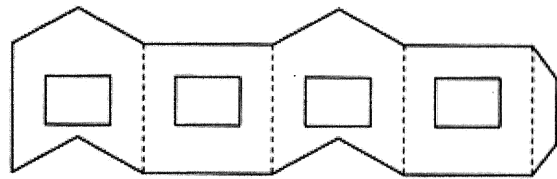
SMALL HOUSE OR SCHOOLHOUSE

Print on cardstock/heavy paper and cut out on solid lines. Fold on dotted lines. Use hot glue or glue stick to put together. Paint lightly and coat in glitter!!
Mount on cardboard base and cut a hole in the bottom for a battery powered tea light or light on your Christmas tree.

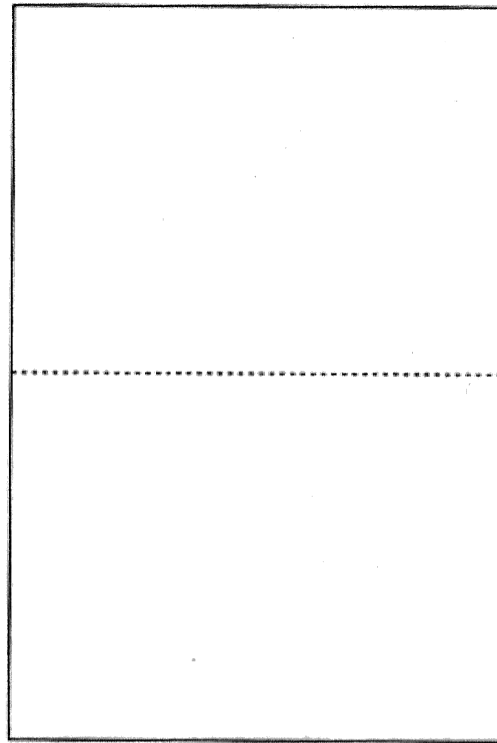
www.allthingswithpurpose.com



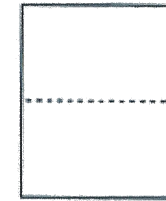
CHIMNEY



BELFRY FOR SCHOOLHOUSE



ROOF



BELFRY ROOF



ROOF OVER DOOR

